



autofren

SEINSA

BRAKE CALIPER PISTONS WITH MECHANISM CATALOGUE 2020



www.seinsa.es

BRAKE CALIPER PISTONS WITH MECHANISM

CATALOGUE 2020



BRAKE CALIPER PISTONS WITH MECHANISM

Prevents the repair shop from having to disassemble the interior of the piston.

We assemble, check and test the operation of 100% of our pistons with mechanisms.

Improper assembly could cause the emergency brake to fail.



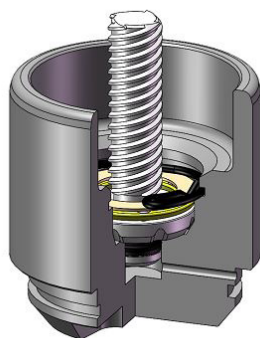
REFERENCES

PISTON KIT → D025***
 PISTON KIT WITH MECHANISM → D025***K (SAME REFERENCE AS PISTON KIT WITH "K" AT THE END)

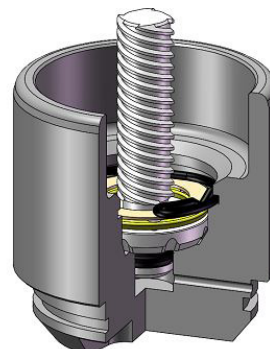
IN SOME CASES, THE INTERNAL ACTUATOR HAS DIFFERENT THREADS: RIGHT OR LEFT, SO THE REFERENCES ARE:

D025***RK (SAME REFERENCE AS PISTON KIT WITH "RK" AT THE END)

D025***LK (SAME REFERENCE AS PISTON KIT WITH "LK" AT THE END)



D025***RK



D025***LK

D025258K	D025577K	D02526K
		
A = 30 B = 24 C = 38,5 Ø 30 MM BENDIX	A = 30 B = 26 C = 40 Ø 30 MM AKEBONO	A = 30 B = 27 C = 43,6 Ø 30 MM LUCAS
CITROEN, PEUGEOT, RENAULT	DAIHATSU, MAZDA	HONDA, MG, ROVER
D025340K (COMING SOON)	D025116K	D025257K
COMING SOON		
A = 30,13 B = 26,2 C = 45 Ø 30 MM AKEBONO	A = 30,15 B = 25,5 C = 46,9 Ø 30 MM NISSIN/LUCAS	A = 32 B = 24 C = 38,6 Ø 32 MM BENDIX
MITSUBISHI, TOYOTA	NISSAN	CITROEN, PEUGEOT, RENAULT
D025319K	D025530K	D02594K
		
A = 33,89 B = 24,2 C = 43,68 Ø 34 MM LUCAS	A = 33,9 B = 28,5 C = 47 Ø 34 MM MANDO	A = 33,9 B = 28,9 C = 46,8 Ø 34 MM MAN/TOK/NIS/TRW
HONDA	HYUNDAI, KIA, SUZUKI	HONDA, HYUNDAI, KIA, MITSUBISHI, NISSAN, SMART
D025620K	D025102K	D02578K
		
A = 33,9 B = 29 C = 51,8 Ø 34 MM TRW	A = 33,9 B = 29,55 C = 41,1 Ø 34 MM KPW	A = 33,91 B = 29,15 C = 48 Ø 34 MM MAN/TOK/NIS/TRW
HONDA, LAND ROVER, MERCEDES, RENAULT	KIA	ABARTH, ALFA ROMEO, VAG, CHEVROLET, FIAT, FORD, HONDA, KIA, LADA, LANCIA, MAZDA, NISSAN, OPEL, RENAULT, SUZUKI, TOYOTA, VAUXHALL

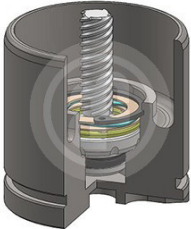
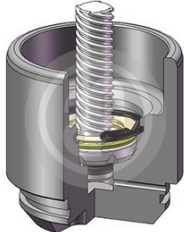
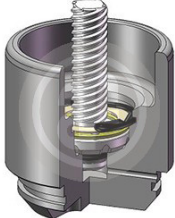
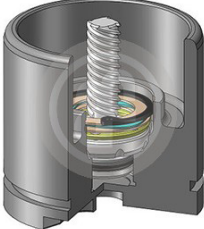
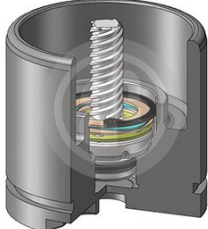
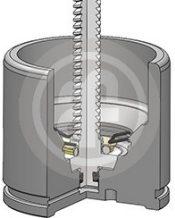
D025545K	D025642K	D025241K
		
A = 33,93 B = 30 C = 42,6 Ø 34 MM KASCO	A = 33,93 B = 30 C = 47 Ø 34 MM MOBIS	A = 33,95 B = 28,95 C = 49,8 Ø 34 MM ATE
KIA	HYUNDAI, KIA	MINI, TOYOTA
D025629K	D02523K	D025233K
		
A = 33,95 B = 29 C = 47,85 Ø 34 MM ATE	A = 33,95 B = 30,5 C = 47 Ø 34 MM BOSCH	A = 34 B = 28 C = 47,25 Ø 34 MM LUCAS
HONDA	CHEVROLET, HYUNDAI, OPEL, VAUXHALL	FIAT, HONDA, MG, ROVER, SUZUKI
D025281K	D025119K	D025267K
		
A = 34,8 B = 29 C = 45 Ø 35 MM AKEBONO	A = 34,82 B = 29,5 C = 40 Ø 35 MM AKEBONO	A = 34,85 B = 30 C = 45 Ø 35 MM AKEBONO
MITSUBISHI	MAZDA	MAZDA, TOYOTA
D025762K (COMING SOON)	D025584K	D025729K (COMING SOON)
COMING SOON		COMING SOON
A = 34,88 B = 29,8 C = 51,05 Ø 35 MM ADVICS	A = 35,93 B = 28,75 C = 49,75 Ø 36 MM ATE	A = 35,93 B = 28,95 C = 47,9 Ø 36 MM ATE
TOYOTA	FORD	FORD, MAZDA

<p style="text-align: center;">D025363LK</p> 	<p style="text-align: center;">D025363RK</p> 	<p style="text-align: center;">D02545LK</p> 
<p>A = 35,93 B = 31,5 C = 48,83 Ø 36 MM BOSCH</p>	<p>A = 35,93 B = 31,5 C = 48,83 Ø 36 MM BOSCH</p>	<p>A = 35,95 B = 25,75 C = 51 Ø 36 MM BREMBO</p>
<p>ABARTH, FIAT, HONDA, IVECO, OPEL, TOYOTA, VAUXHALL</p>	<p>ABARTH, FIAT, HONDA, IVECO, OPEL, TOYOTA, VAUXHALL</p>	<p>MAZDA, RENAULT</p>
<p style="text-align: center;">D02545RK</p> 	<p style="text-align: center;">D025221K</p> 	<p style="text-align: center;">D025418K</p> 
<p>A = 35,95 B = 25,75 C = 51 Ø 36 MM BREMBO</p>	<p>A = 35,95 B = 32,1 C = 46,95 Ø 36 MM BENDIX-BOSCH</p>	<p>A = 36,06 B = 28,95 C = 48 Ø 36 MM LUCAS</p>
<p>MAZDA, RENAULT</p>	<p>OPEL, VAUXHALL</p>	<p>ALFA ROMEO, CHEVROLET, MINI, OPEL, VAUXHALL</p>
<p style="text-align: center;">D025602K</p> 	<p style="text-align: center;">D025251K</p> 	<p style="text-align: center;">D025417K</p> 
<p>A = 36,06 B = 29 C = 51,8 Ø 36 MM TRW</p>	<p>A = 37,93 B = 29,05 C = 49,75 Ø 38 MM ATE</p>	<p>A = 37,94 B = 29 C = 47,75 Ø 38 MM ATE</p>
<p>LAND ROVER, MERCEDES, NISSAN, RENAULT</p>	<p>CHEVROLET, CITROEN, FORD, ISUZU, MAZDA, MERCEDES, NISSAN, OPEL, RENAULT, SAAB, VAUXHALL, VOLVO</p>	<p>CHEVROLET, OPEL, PEUGEOT, VAUXHALL</p>
<p style="text-align: center;">D025422LK</p> 	<p style="text-align: center;">D025422RK</p> 	<p style="text-align: center;">D025222K</p> 
<p>A = 37,95 B = 32,8 C = 50,25 Ø 38 MM BOSCH</p>	<p>A = 37,95 B = 32,8 C = 50,25 Ø 38 MM BOSCH</p>	<p>A = 37,96 B = 33,3 C = 47,1 Ø 38 MM BENDIX-BOSCH</p>
<p>CITROEN, TOYOTA</p>	<p>CITROEN, TOYOTA</p>	<p>CHEVROLET, FIAT, OPEL, VAUXHALL</p>

D025122LK	D025122RK	D025777LK
		
A = 37,98 B = 34,15 C = 51	A = 37,98 B = 34,15 C = 51	A = 37,98 B = 34,15 C = 51
Ø 38 MM BENDIX-BOSCH	Ø 38 MM BENDIX-BOSCH	Ø 38 MM BENDIX-BOSCH
FORD, JAGUAR, RENAULT	FORD, JAGUAR, RENAULT	JAGUAR, RENAULT
D025777RK	D02554RK	D02554LK
		
A = 37,98 B = 34,15 C = 51	A = 38 B = 32,8 C = 49	A = 38 B = 32,8 C = 49
Ø 38 MM BENDIX-BOSCH	Ø 38 MM BOSCH	Ø 38 MM BOSCH
JAGUAR, RENAULT	ALFA ROMEO, VAG, CHRYSLER, CITROEN, FIAT, FORD, JAGUAR, LANCIA, MAZDA, PEUGEOT, RENAULT	ALFA ROMEO, VAG, CHRYSLER, CITROEN, FIAT, FORD, JAGUAR, LANCIA, MAZDA, PEUGEOT, RENAULT
D025541K	D025120K	D025472K
		
A = 38,1 B = 31,75 C = 51,8	A = 38,1 B = 33 C = 46,8	A = 38,1 B = 33 C = 47,15
Ø 38 MM TRW	Ø 38 MM TOKICO/NIS/MAN/AISIN	Ø 38 MM NISSIN
FIAT, FORD, JEEP, LANCIA, MAZDA, MERCEDES, NISSAN, RENAULT, VOLKSWAGEN, VOLVO	HONDA, HYUNDAI, LEXUS, MAZDA, MG, NISSAN, ROVER, TOYOTA	HONDA
D02519K	D025667K	D025295K
		
A = 38,1 B = 33 C = 51	A = 38,1 B = 33,15 C = 51	A = 38,12 B = 29,57 C = 41,17
Ø 38 MM TRW	Ø 38 MM TRW	Ø 38 MM KASCO
ALFA ROMEO, VAG, BMW, CHEVROLET, PSA, FIAT, FORD, HOLDEN, HONDA, HYUNDAI, KIA, LANCIA, MERCEDES, MINI, MITSUBISHI, NISSAN, OPEL, RENAULT, SAAB, TOYOTA, VAUXHALL, VOLVO	JAGUAR	KIA

D025529K	D025778K (COMING SOON)	D025633K (COMING SOON)
	COMING SOON	
A = 38,12 B = 33 C = 47,1 Ø 38 MM NISSIN	A = 38,13 B = 33,7 C = 47,15 Ø 38 MM MOBIS	A = 38,14 B = 32,55 C = 48,55 Ø 38 MM MANDO
HONDA	KIA	HYUNDAI, KIA
D025787K (COMING SOON)	D025780K (COMING SOON)	D025558K
COMING SOON	COMING SOON	
A = 38,14 B = 32,55 C = 48,9 Ø 38 MM MANDO	A = 38,15 B = 33 C = 47 Ø 38 MM MANDO	A = 39,93 B = 28,95 C = 49,85 Ø 40 MM ATE
HYUNDAI	KIA	OPEL, SAAB, VAUXHALL
D025605K	D025719K (COMING SOON)	D025536K
	COMING SOON	
A = 39,93 B = 29 C = 47,8 Ø 40 MM ATE	A = 40,4 B = 35,3 C = 51 Ø 41 MM ADVICS	A = 40,99 B = 35 C = 51,75 Ø 41 MM TRW
CHEVROLET, OPEL, VAUXHALL	LEXUS	AUDI, SEAT, VOLKSWAGEN, VOLVO
D02593K	D025704K	D025441LK
		
A = 41,01 B = 35,1 C = 51,1 Ø 41 MM TRW	A = 41,15 B = 36,5 C = 45 Ø 41 MM AKEBONO	A = 41,95 B = 36,48 C = 51 Ø 42 MM BENDIX-BOSCH
ALFA ROMEO, VAG, CHEVROLET, PSA, FIAT, NISSAN, OPEL, RENAULT, SAAB, TOYOTA, VAUXHALL	CITROEN, MITSUBISHI, PEUGEOT	NISSAN, OPEL, RENAULT, VAUXHALL

D025441RK	D025126K	D025543K
		
A = 41,95 B = 36,48 C = 51 Ø 42 MM BENDIX-BOSCH	A = 42,78 B = 37,1 C = 51 Ø 43 MM TRW	A = 42,8 B = 36,15 C = 52 Ø 43 MM TRW
NISSAN, OPEL, RENAULT, VAUXHALL	AUDI, CHRYSLER, FIAT, JAGUAR, VOLKSWAGEN	AUDI, LAND ROVER, VAUXHALL, VOLVO
D025786K (COMING SOON)	D025583LK	D025583RK
COMING SOON		
A = 44,97 B = 36,9 C = 52,7 Ø 45 MM TRW	A = 45,93 B = 11 C = 66,25 Ø 46 MM BREMBO	A = 45,93 B = 11 C = 66,25 Ø 46 MM BREMBO
CITROEN, PEUGEOT	NISSAN	NISSAN
D025682K	D025641LK	D025641RK
		
A = 47,93 B = 43 C = 53,5 Ø 48 MM BREMBO	A = 47,96 B = 39 C = 52 Ø 48 MM TRW	A = 47,96 B = 39 C = 52 Ø 48 MM TRW
NISSAN, OPEL, RENAULT, VAUXHALL	FORD	FORD
D025234LK	D025234RK	D025520LK
		
A = 51,65 B = 25,9 C = 64,9 Ø 52 MM BREMBO	A = 51,65 B = 25,9 C = 64,9 Ø 52 MM BREMBO	A = 53,93 B = 48,25 C = 52,4 Ø 54 MM BOSCH
FORD, IVECO	FORD, IVECO	CITROEN

D025520RK	D025691LK	D025691RK
		
A = 53,93 B = 48,25 C = 52,4 Ø 54 MM BOSCH	A = 53,98 B = 45 C = 54,4 Ø 54 MM BOSCH	A = 53,98 B = 45 C = 54,4 Ø 54 MM BOSCH
CITROEN	FORD	FORD
D025256LK	D025256RK	D025681K
		
A = 57 B = 49 C = 52,7 Ø 57 MM BOSCH	A = 57 B = 49 C = 52,7 Ø 57 MM BOSCH	A = 59,93 B = 50 C = 54 Ø 60 MM BREMBO
CITROEN	CITROEN	NISSAN, OPEL, RENAULT, VAUXHALL



autofren

SEINSA



For more information visit our website: www.seinsa.es



SEGURIDAD INDUSTRIAL, S.A.

Elizguíbel 31638, Eugi, Navarra (SPAIN)

T+34 948 30 40 31

export@seinsa.es

General e-mail: seinsa@seinsa.es